

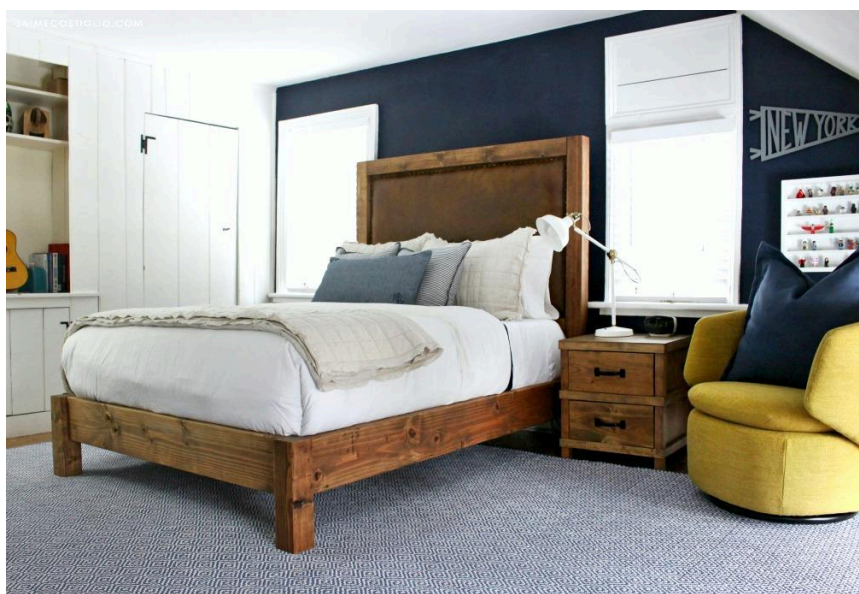
wood and leather bed

By **Jaime Costiglio**

Difficulty

Advanced

Use basic off the shelf lumber to build a beautiful and functional bed. This full size wood and leather bed uses simple construction techniques and can easily be modified to fit your mattress size. The inset headboard space will accommodate a variety of materials including fabric and wood boards.





Tools

Kreg Tools



Other Tools

Circular Saw (cordless)

Miter Saw

Tape Measure

Drill (cordless)

Sander

Materials

Wood Products

- 2 Board , 4x4 , 96"
- 4 Board , 2x4 , 96"
- 2 Board , 2x8 , 96"
- 1 Board , 2x8 , 120"
- 1 Board , 2x3 , 96"
- 1 Plywood , 1/2" Thick , Full Sheet
- 1 Board , 1x4 , 120"
- 9 Board , 1x3 , 120"

Hardware & Supplies

- 30 2 1/2" Pocket Hole Screws
- 20 2 1/2" Wood Screws
- 20 1 1/4" Pocket Hole Screws
- 20 2" Wood Screws
- 20 1 1/4" Wood Screws
- 1 Pair Center Bed Rail Fasteners
- 1 Pack Surface Mounted Bed Rail Brackets

Cut List & Parts

- 2 Headboard Legs , 4x4@61"
- 2 Footboard Legs , 4x4@13 1/2"
- 2 Headboard Frame , 2x4@52"
- 2 Mattress Support , 2x4@70"
- 2 Short Ends , 2x8@52"
- 2 Long Sides , 2x8@74"
- 1 Center Mattress Support , 2x3@74 1/2"
- 17 Slats , 1x3@54"
- 1 Headboard Backing , 1/2"@38 1/2"x52"
- 3 Backing Support , 1x4@38 1/2"

Cut List:

- 2 – 4x4 @ 61" (headboard legs)
- 2 – 4x4 @ 13 1/2" (footboard legs)
- 2 – 2x4 @ 52" (headboard frame)
- 2 – 2x4 @ 70" (mattress support)
- 2 – 2x8 @ 52" (short ends)
- 2 – 2x8 @ 74" (long sides)
- 1 – 2x3 @ 74 1/2" (center mattress support)
- 17 – 1x3 @ 54" (mattress slats)
- 1 – 1/2" plywood @ 38 1/2" x 52" (headboard backing)
- 3 – 1x4 @ 38 1/2" (backing support)

Directions

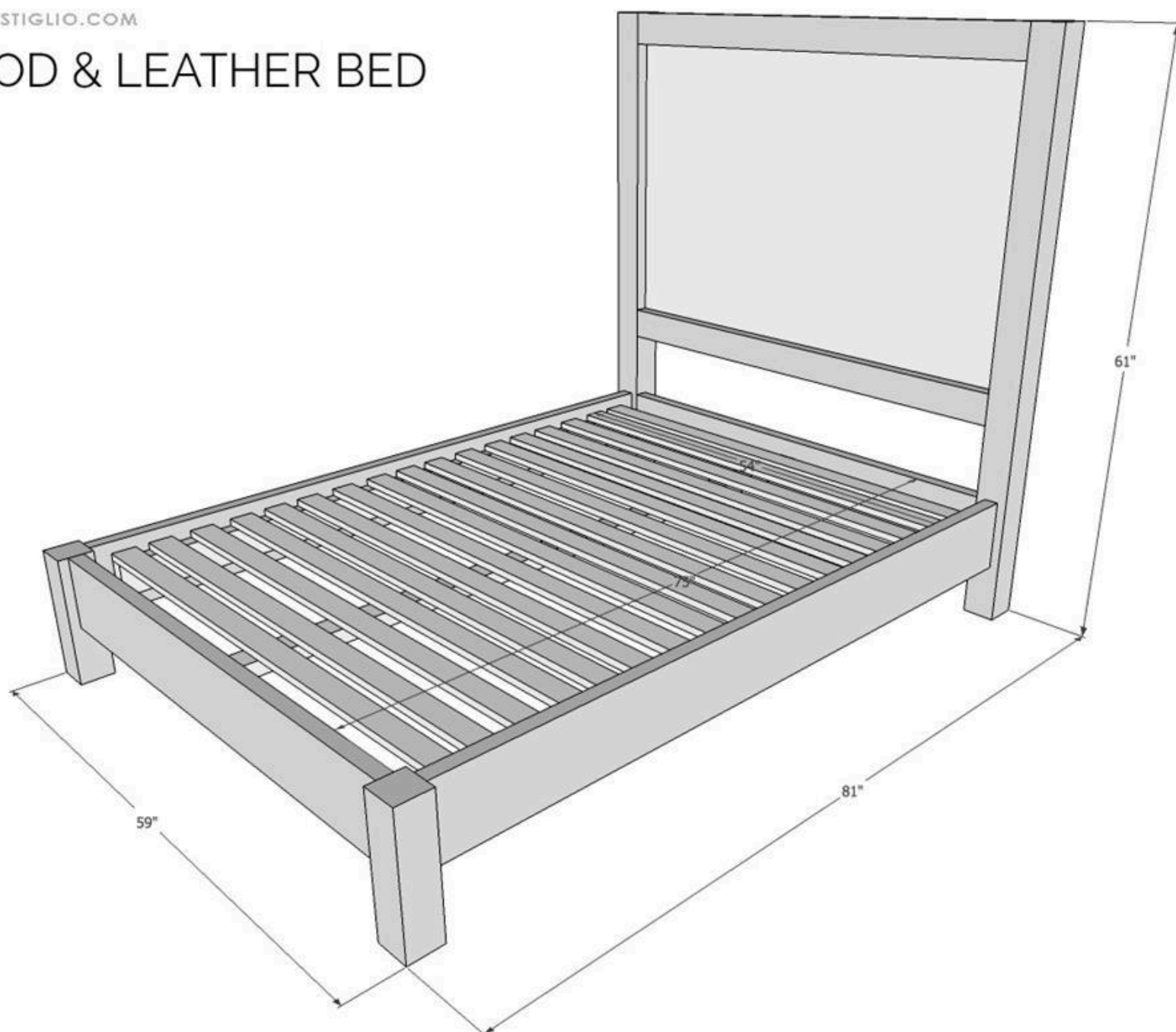
1

Dimensions

This fits a full size mattress (75 x 54).

JAIMECOSTIGLIO.COM

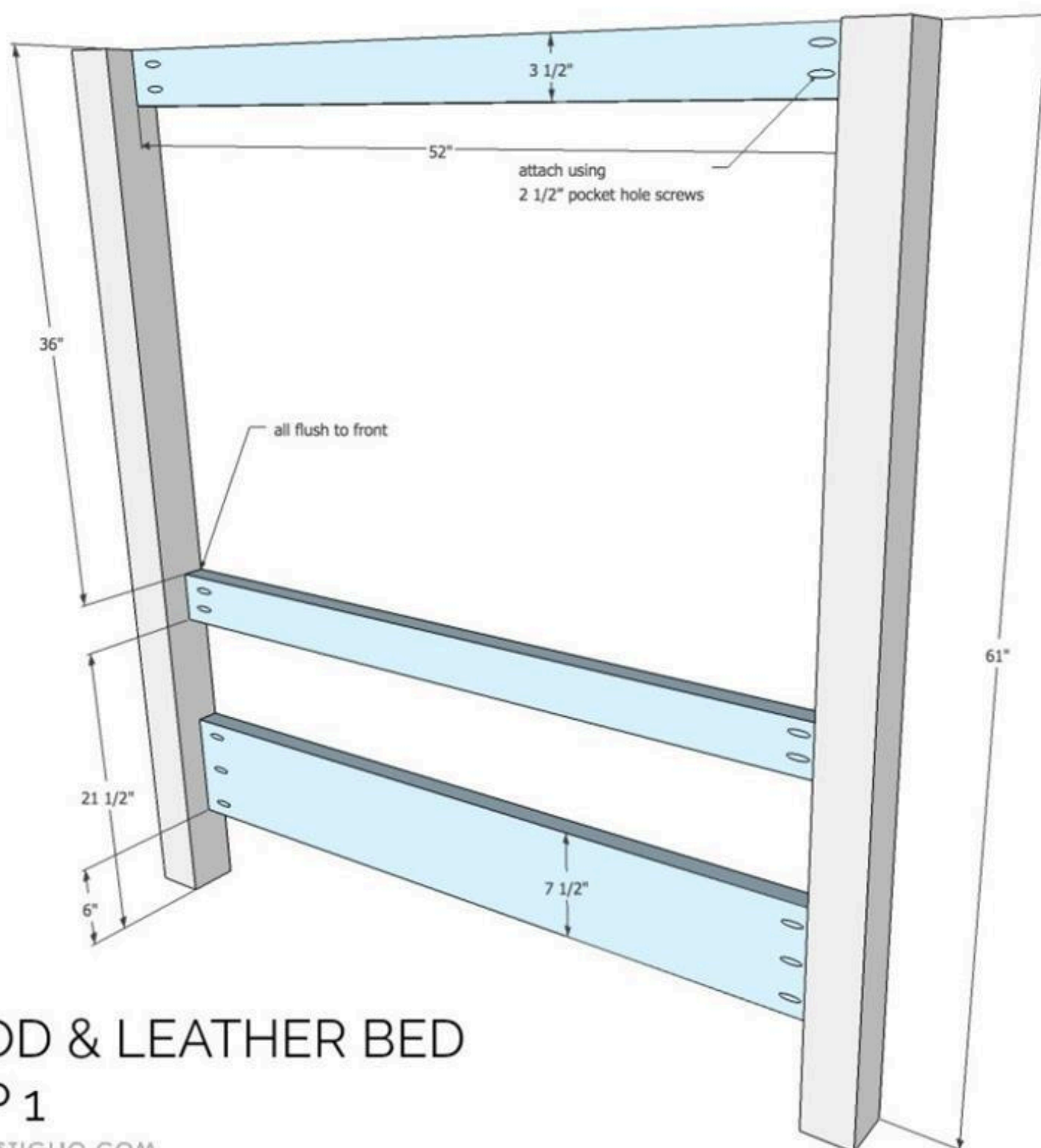
WOOD & LEATHER BED



2

Step 1

Make the headboard frame. Attach the cross supports to the legs as indicated using 2 1/2" pocket hole screws. Keep all cross boards flush to front of 4x4 post legs.



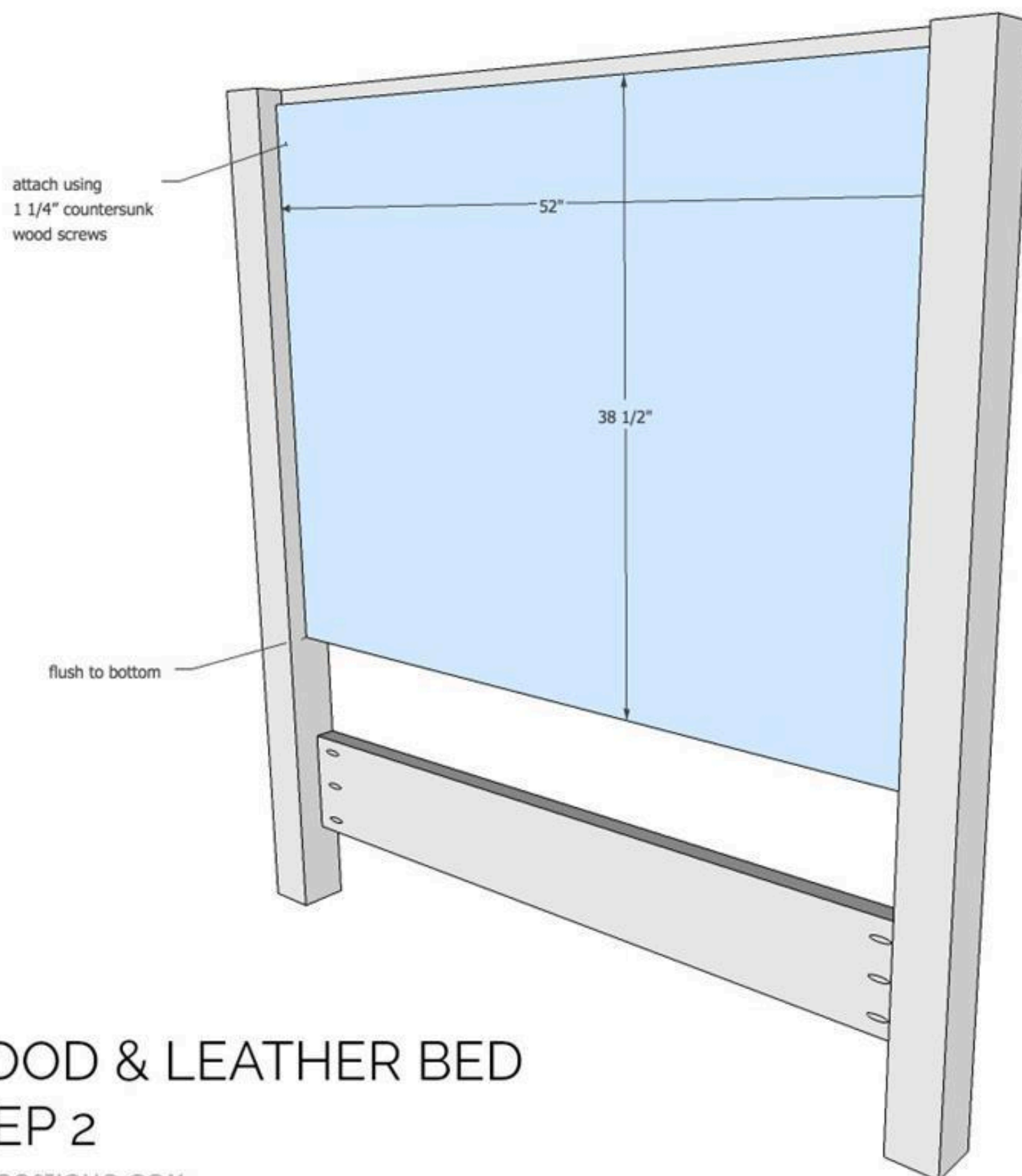
WOOD & LEATHER BED STEP 1

JAIMECOSTIGLIO.COM

3

Step 2

Attach plywood backing to cross supports using 1 1/4" countersunk wood screws. Keep flush to lower cross support.



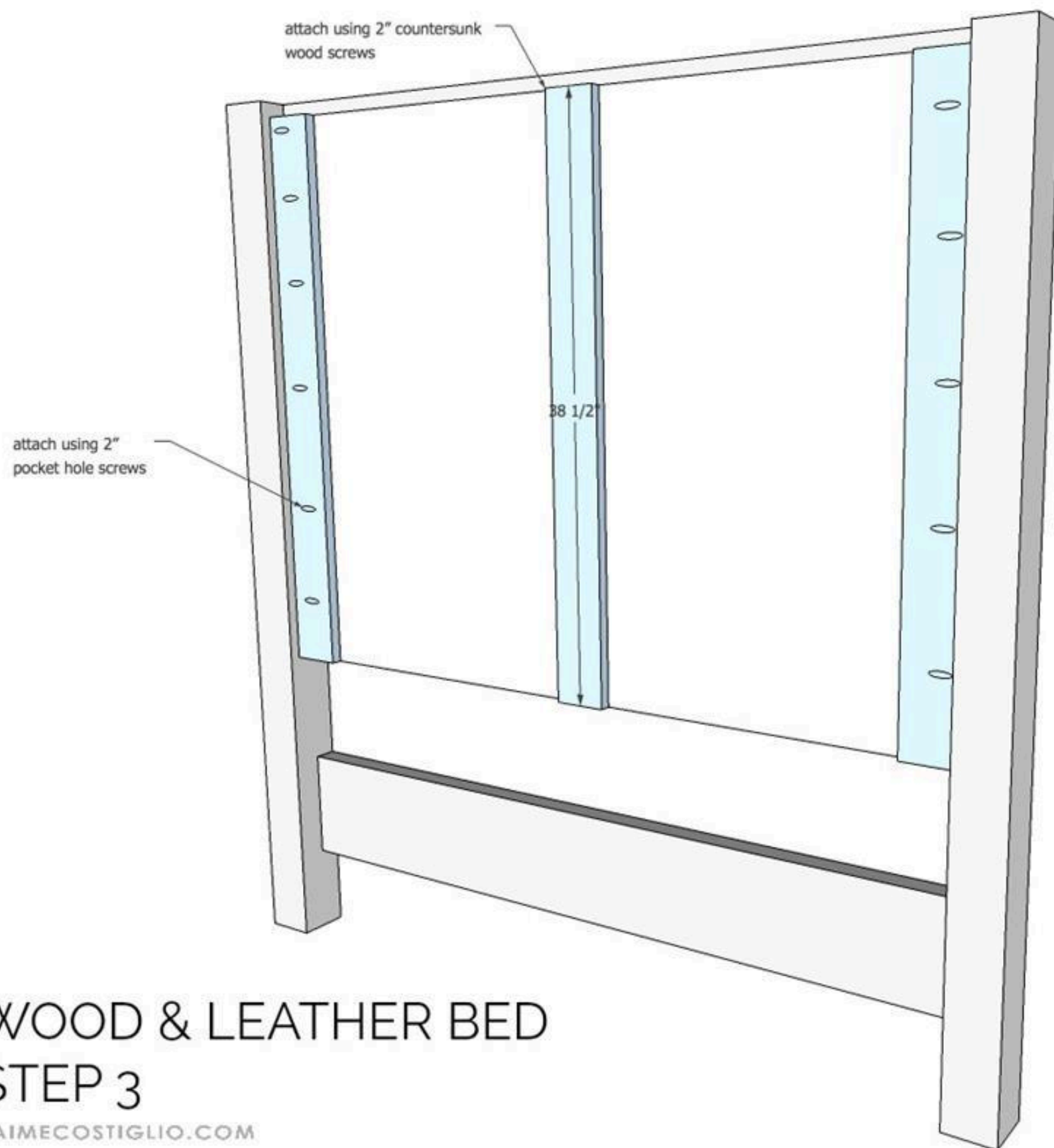
WOOD & LEATHER BED STEP 2

JAIMECOSTIGLIO.COM

4

Step 3

Attach vertical headboard backing supports using 2" countersunk wood screws and pocket holes at sides.



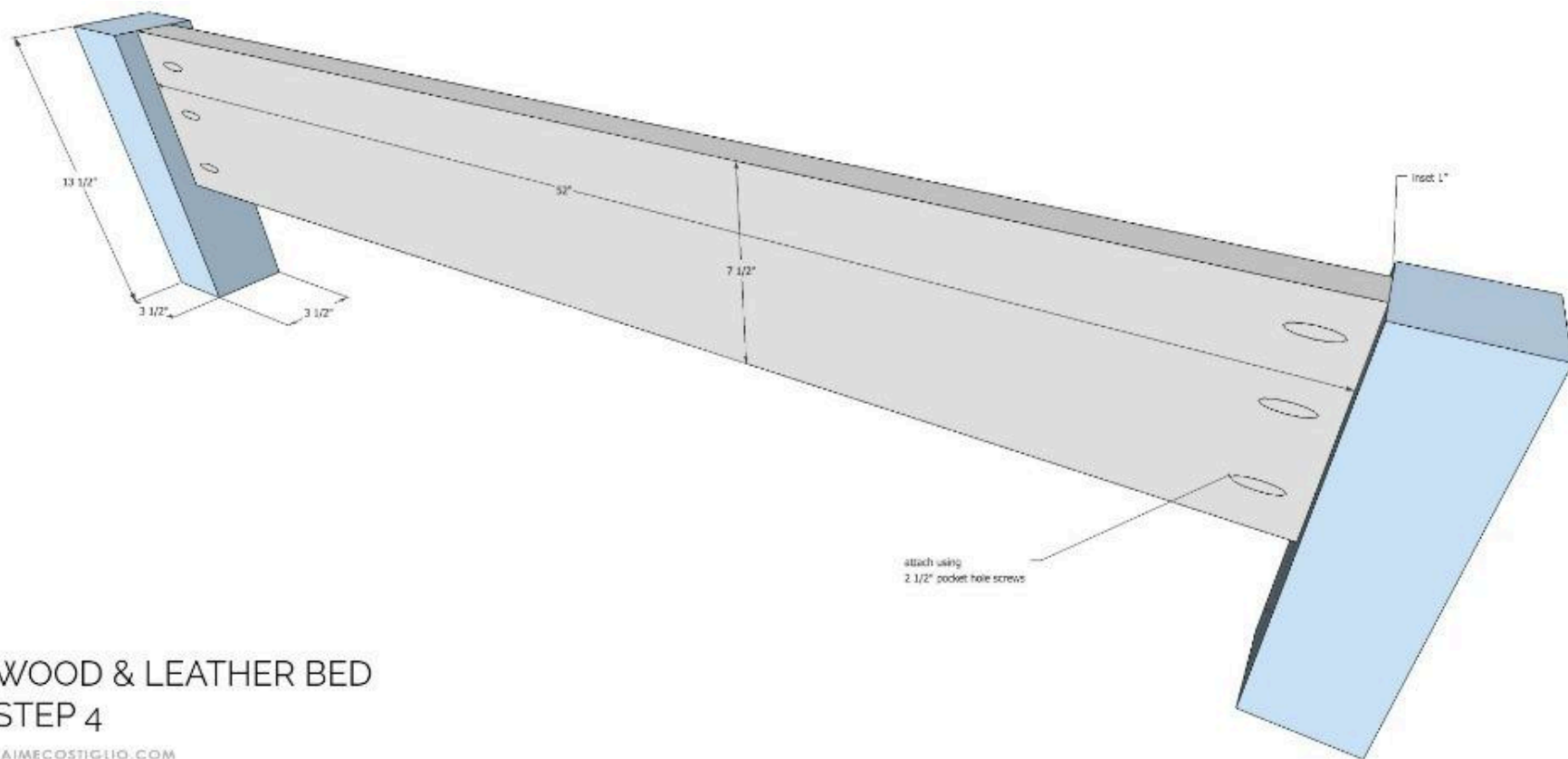
WOOD & LEATHER BED STEP 3

JAIMECOSTIGLIO.COM

5

Step 4

Make footboard by attaching 2x8 to posts using 2 1/2" pocket hole screws. Center 2x8 on post keeping 1" inset at both front and back.



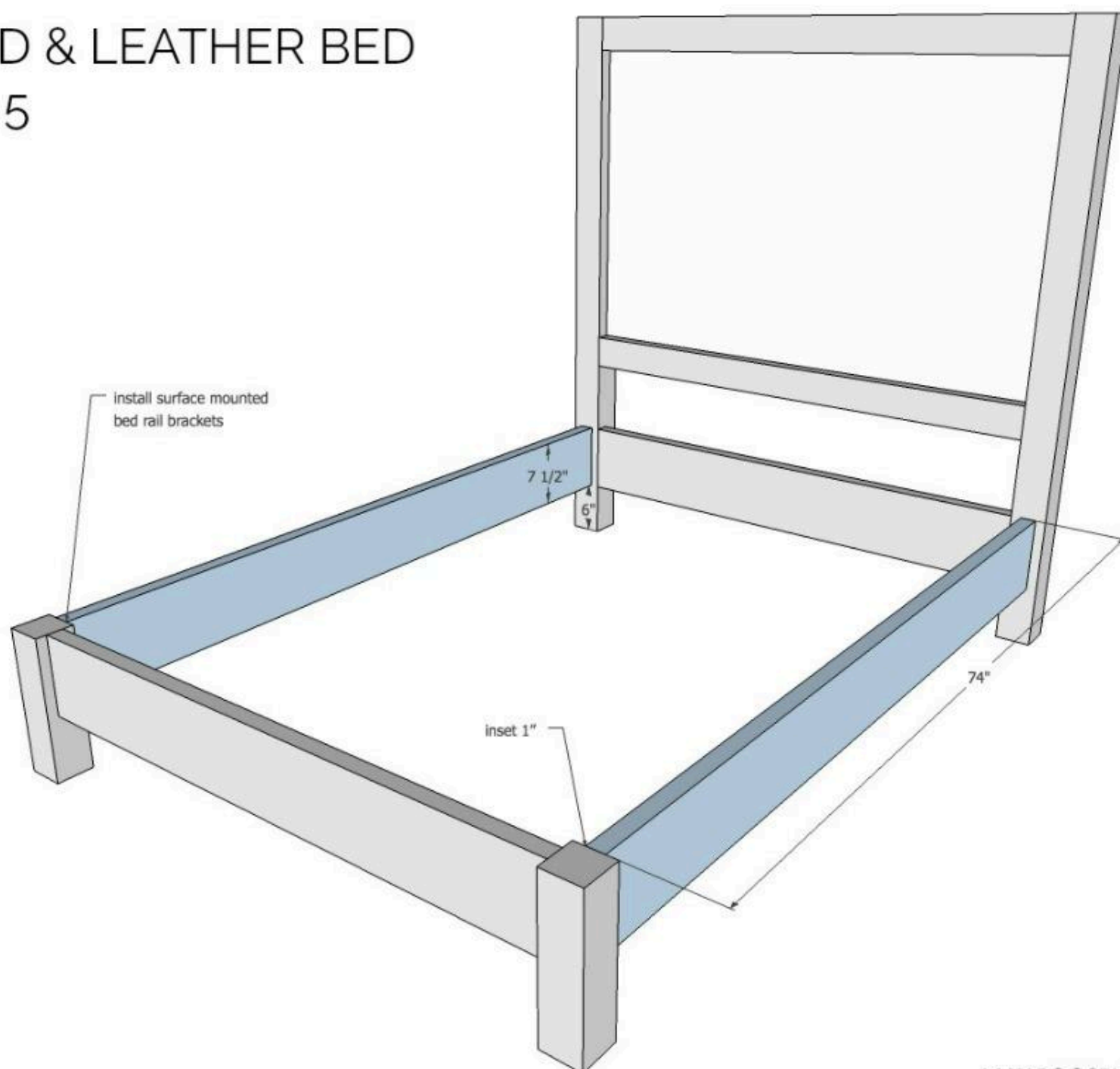
WOOD & LEATHER BED
STEP 4

JAIMECOSTIGLIO.COM

6**Step 5**

Assemble the bed frame using surface mounted bed rail brackets.

WOOD & LEATHER BED STEP 5

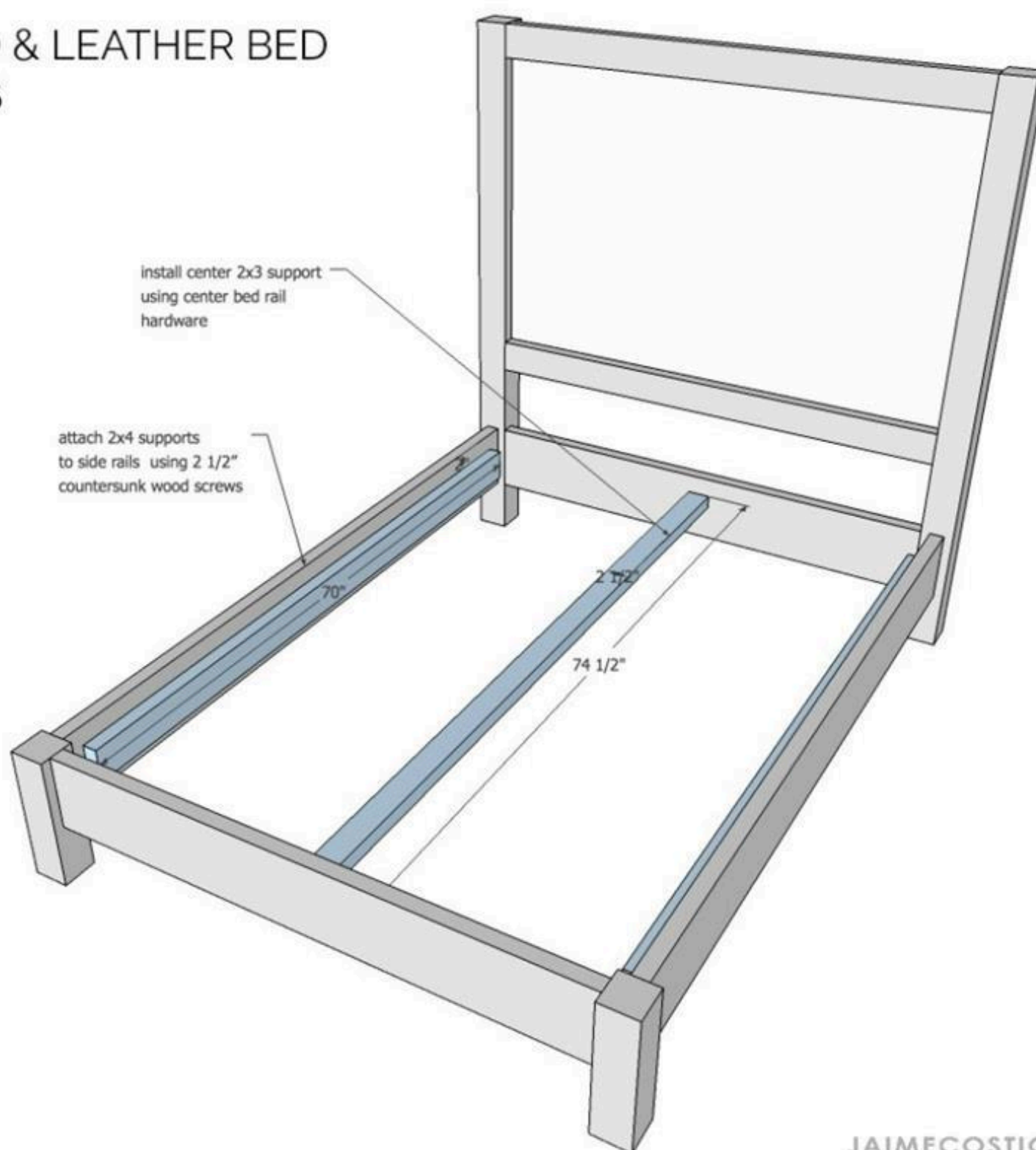


JAIMECOSTIGLIO.COM

7**Step 6**

Attach long mattress supports to side rails keeping 2" clearance above. Use 2 1/2" countersunk wood screws from the interior. Install center 2x3 mattress support using center bed rail hardware.

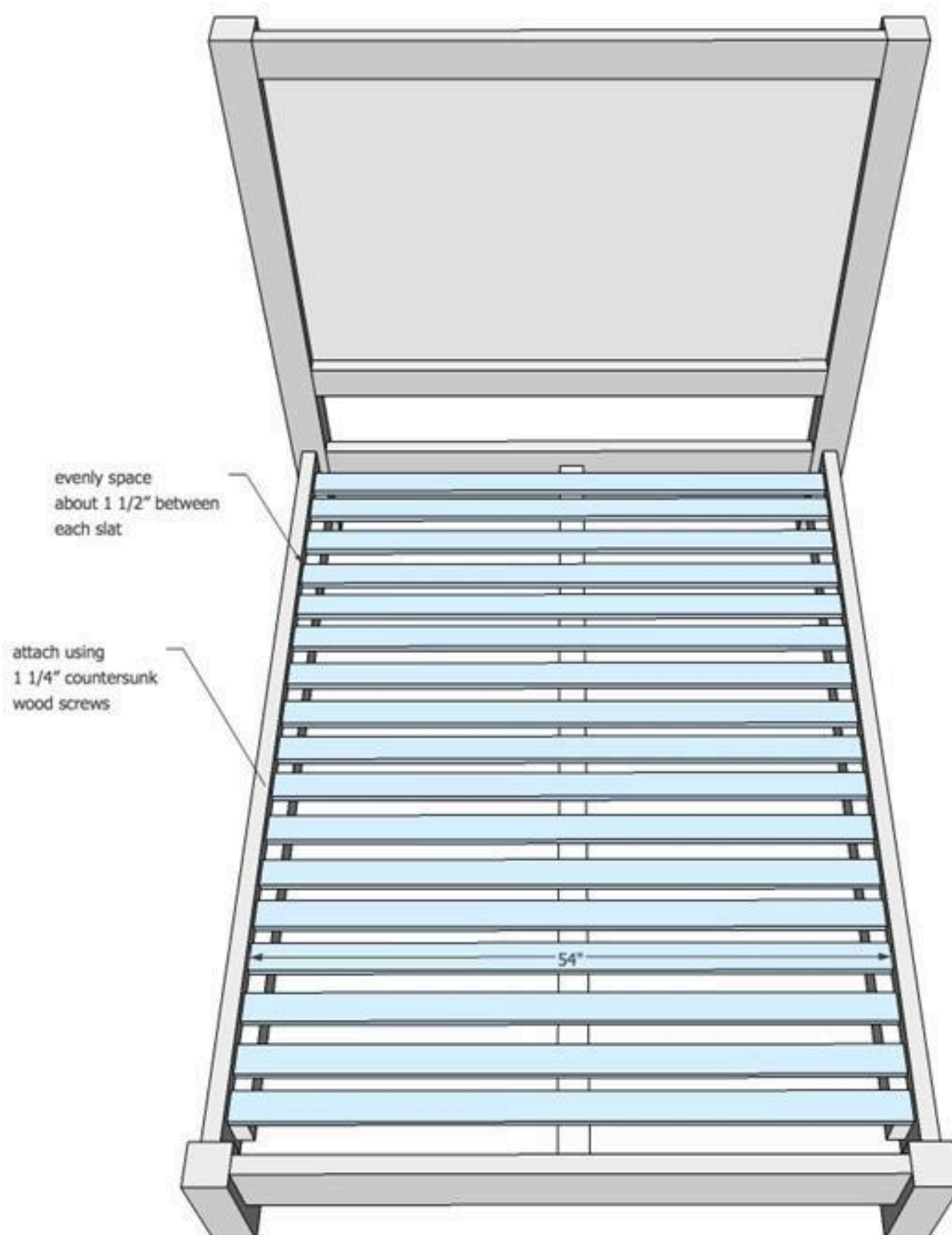
WOOD & LEATHER BED STEP 6



JAIMECOSTIGLIO.COM

8**Step 7**

Attach the mattress slats using 1 1/4" countersunk wood screws. Keep even spacing about 1 1/2" between slats.



WOOD & LEATHER BED STEP 7

JAIMECOSTIGLIO.COM